

Student Name _____ *Date Submitted* _____

MUSIC 10: GENERAL (v1)

Section 1.0 Send-In

Complete this send-in as part of your course enrollment. This will be your first mark entered for the course. When this assignment has been received by SCIDES, your course materials will be sent to you.

This send-in consists of:

- Music 10: General Course Planner _____ / 5 marks
- Review of Lessons 1-5 _____ /14 marks

TOTAL: _____ / 19 marks _____ %



Mail:

- 1) This **Cover Sheet**
- 2) **Return Address** (page 2 or Comment Sheet) – Fill out with your complete name and address.
- 3) **Send-In Assignments** – Completed above noted assignments.

*Be sure to put proper **postage** on the envelope (if necessary) and add your **return address**.*

[This page intentionally left blank.]

Is this a change of address?

Yes

No

Please print in pencil

NAME
ADDRESS
CITY / TOWN, PROVINCE / COUNTRY, POSTAL CODE

Use this address box
if you are mailing
a **TEST**

Please print

NAME
ADDRESS
CITY / TOWN
PROVINCE / COUNTRY
POSTAL CODE

Is this a change of address?

Yes

No

Use this address box
if mailing a
SEND-IN ACTIVITY

[This page intentionally left blank.]

Name: _____

___ / 5 marks

COURSE NAME Course Planner

Complete **all** the following contact information that applies to you and check the one that is the best way to contact you during the day:

Home Phone: _____ Work Phone: _____ Cell: _____

Email: _____

other way to contact you (explain) _____

When is the best time for your teacher or tutor/marker to contact you? ___:___ AM PM

Check your Grade: Grade 10 Grade 11 Grade 12 Graduated

Timetable Options/Course Plan

One of the keys to being successful in anything that you do is to take the time to plan carefully. The objective of this section is to help you create a timetable for managing your schoolwork and enable you to set goals for finishing all of your courses by your desired completion date. **Most full-time students complete 3 to 5 assignments each week.**

The flexibility of our distributed learning program offers you many choices but a plan for completion is essential to success. Most full-time students complete 8 courses in a school year (10 months). The most common timetables are "semestered" (4 courses at a time) or "linear" (8 courses at a time).

What is your planned schedule? Semester System (22 weeks) Linear System (44 weeks)

other: *(explain)* _____

What is your intended **start** date for this course? Now Other date: _____

What is your intended **completion** date for this course? _____ (month) _____ (year)

How many courses are you taking with us this year? _____ How many with other schools/programs? _____

Music 10 consists of 16 sections and 3 mid-terms. How many assignments/tests per week must you do to complete this course as planned? _____



- *Mark target submission dates on a calendar.*
- *Add this same information from other courses to help you create a schedule for completion.*
- *Record the actual dates you submit work so you can track your progress.*



Delivery Method

Music 10: General is offered as a print course only. You will receive workbooks in print form and will be submitting your assignments through the regular mail.

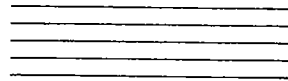
If you have access to the Internet, you will find some great online resources to support your learning by searching for key words in the assignments.

Anything else?

Is there anything else you would like us to know about you or your education plans that will help us provide you with better service?

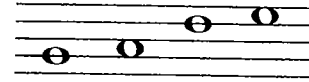
The Staff, Notes and Pitches

Music is written on a STAFF of five lines and the four spaces between.

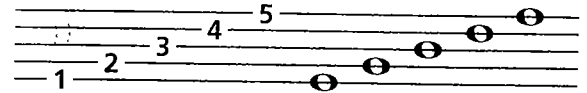


The STAFF

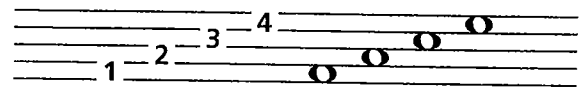
Music NOTES are oval-shaped symbols that are placed on the lines and in the spaces. They represent musical sounds, called PITCHES.



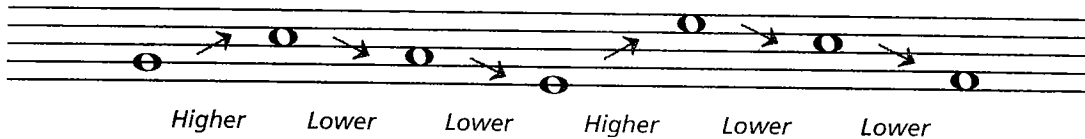
The lines of the staff are numbered from bottom to top.



The spaces between the lines are also numbered from bottom to top.



If the notes appear *higher* on the staff, they sound *higher* in pitch.
If the notes appear *lower* on the staff, they sound *lower* in pitch.



Exercises

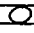
- 1 Draw a staff by connecting the dots. Use a ruler or straight edge. Number the lines, then the spaces from low to high.

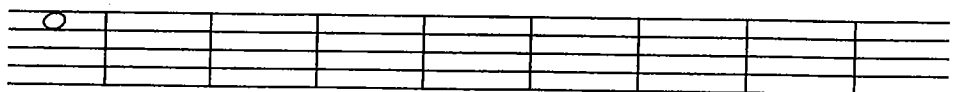


- 2 On the staff, mark an X in the following locations:



Line 3 Space 2 Line 1 Space 4 Line 5 Space 1 Line 4 Space 3 Line 2

- 3 Write notes like this  on the following lines and spaces:



Space 4 Line 1 Space 2 Line 3 Space 1 Line 5 Space 3 Line 2 Line 4

- 4 Indicate whether the 2nd note is higher or lower than the 1st note by using an H (higher) or L (lower).

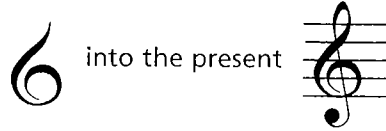


Treble Clef and Staff

Music notes are named after the first seven letters of the alphabet, from A to G. By their position on the staff, they can represent the entire range of musical sound.

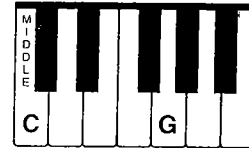
CLEF signs help to organize the staff so notes can easily be read.

The TREBLE CLEF is used for notes in the higher pitch ranges. The treble (or G) clef has evolved from a stylized letter G:

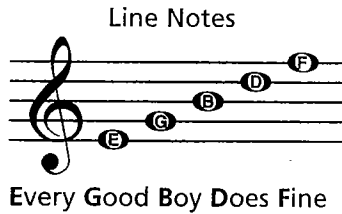


The curl of the treble clef circles the line on which the note G is placed. This G is above MIDDLE C (the C nearest the middle of the keyboard).

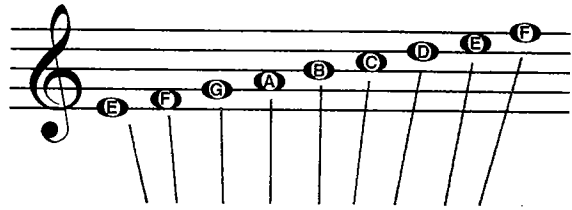
The TREBLE STAFF



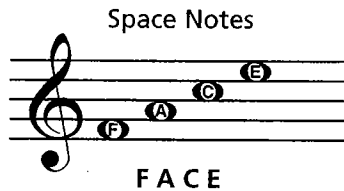
In the treble staff, the names of the notes on the lines from bottom to top are E, G, B, D, F.



All the notes of the TREBLE STAFF:



The names of the notes in the spaces from bottom to top spell FACE.

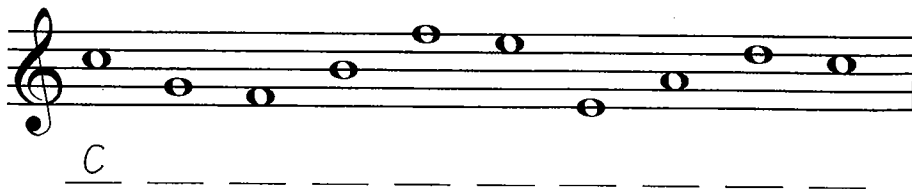


Exercises

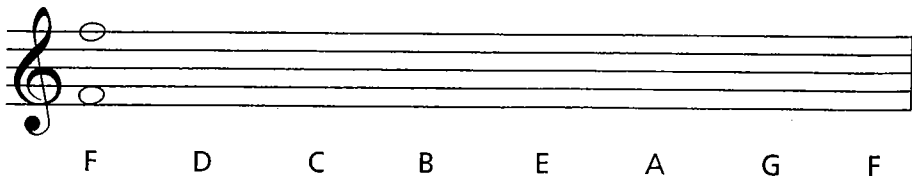
- The treble clef is written in two motions. Trace along the dotted lines as indicated, then draw four more.



- Write the letter names of the following notes. Use capital letters.

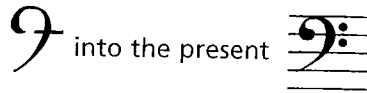


- Write the notes on the staff indicated by the letters. If the notes can be written in two places, write one above the other.



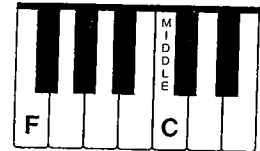
Bass Clef and Staff

The BASS CLEF (pronounced "base") is used for notes in the lower pitch ranges. The bass (or F) clef has evolved from a stylized letter F:



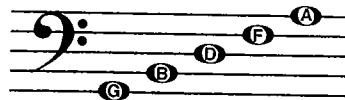
The two dots of the bass clef surround the line on which the note F is placed. This F is below middle C.

The BASS STAFF



In the bass staff, the names of the notes on the lines from bottom to top are G, B, D, F, A.

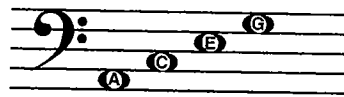
Line Notes



Good Boys Do Fine Always

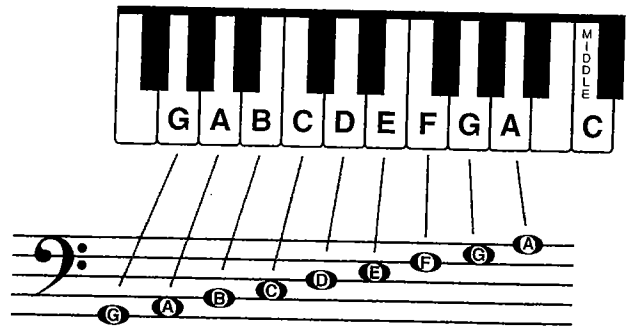
The names of the notes in the spaces from bottom to top are A, C, E, G.

Space Notes



All Cows Eat Grass

All the notes of the BASS STAFF:



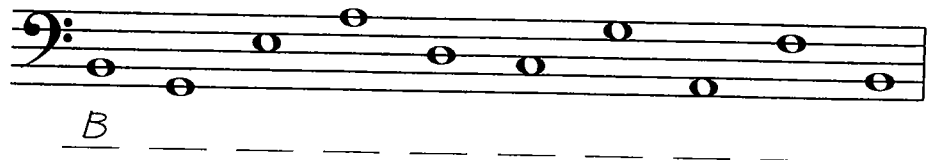
Exercises

- The bass clef is written in four motions. Trace along the dotted lines as indicated, then draw four more.

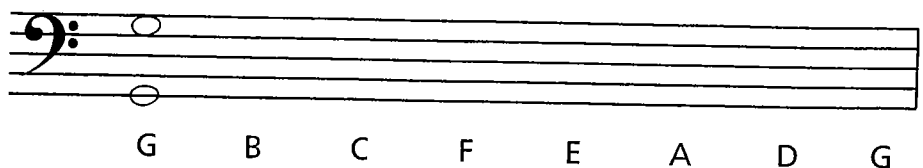
Motion 1: Dot on 4th line
 Motion 2: Curved line
 Motions 3 & 4: Dots surrounding 4th line



- Write the letter names of the following notes.



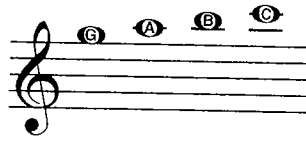
- Write the notes on the staff indicated by the letters. If the notes can be written in two places, write one above the other.



Ledger Lines

Low and High Notes

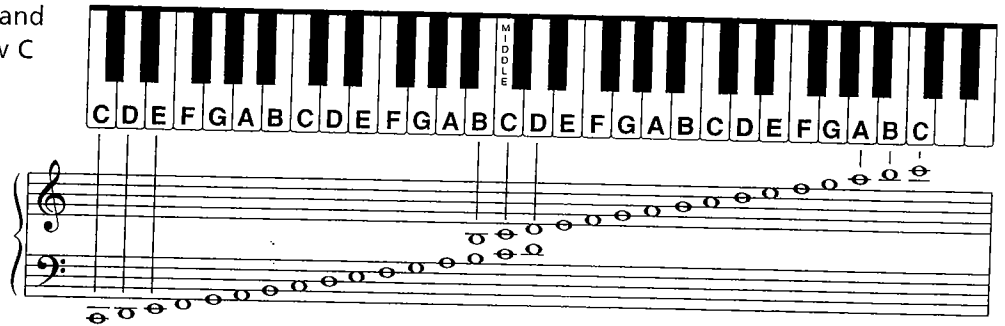
More than one ledger line may be added to extend the lower and upper ranges of the grand staff. The next higher notes of the treble staff are G, A, B and C.



The next lower notes of the bass staff are F, E, D and C.



All the notes on the grand staff from bass clef Low C to treble clef High C:

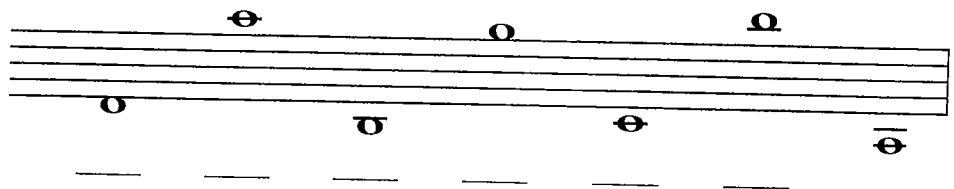


Exercises

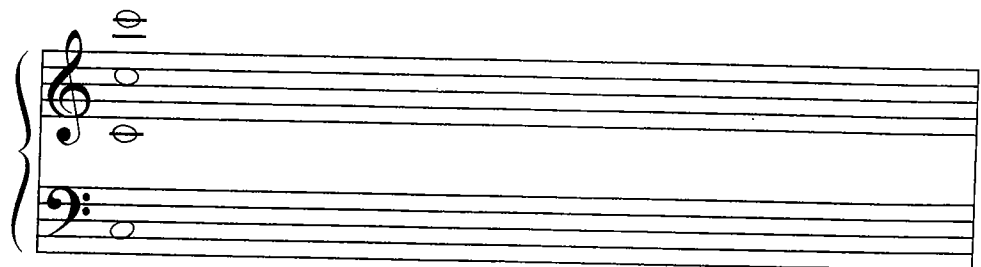
- 1 Draw a treble clef and name the notes.



- 2 Draw a bass clef and name the notes.



- 3 Write each of the indicated notes in four places on the grand staff.



C D E F G A B

1 How many lines are on a single staff? _____

2 How many spaces are on a single staff? _____

3 Is the 5th line at the bottom or top of the staff?

4 Which clef is also known as the G clef? _____

5 The note names of the five lines in the treble clef from bottom to top are:

6 The note names of the four spaces in the treble clef from bottom to top are:

7 The line through middle C is called a _____ line.

8 Which clef is also known as the F clef? _____

9 The note names of the five lines in the bass clef from bottom to top are:

10 The note names of the four spaces in the bass clef from bottom to top are:

11 Write the letter names of the notes.



a. _____ b. _____ c. _____ d. _____ e. _____ f. _____

12 Write the letter names of the notes.



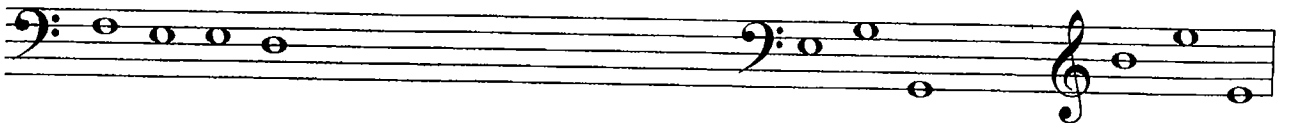
13 Draw the grand staff and name the notes.



14 Spell the words to complete the sentences below.



_____ took his lunch _____ and went downtown in a _____ to



_____ the pigeons in the park. While eating his _____ sandwich, a _____



flew by and barely missed his _____ decided to go home.